

Carsen Theater Tech Packet

LIGHTING

Console:

One ETC Express 48/96

Dimmers:

Ten Leprecon LD360HP 6-channel dimmer packs, DMX control, Edison input

There are currently 2 packs with 1 channel non-working and 1 pack with 2 channels not working. TOTAL WORKING DIMMERS: 56

Instruments:

15 ETC Source4 36° Lekos 575w

10 ETC Source4 Jr. 36° Lekos 575w

6 ETC Source4 Pars with lens kits 575w

4 ETC Source4 Zooms 25°-50° 575w

4 Selecon Fresnels 650w

3 Altman 6" Fresnels 575w

3 Strand 6" Fresnelites 575w

AUDIO

Console: One Mackie 1642 VLZ-Pro

Speakers: Two Mackie SRM-350 powered speakers

Headset system with booth base station and 3 beltpacks and headsets

SEATING RISERS

(each riser requires 4 legs)

Sixteen @ 8'X3' platforms

Seven @ 6'X3' platforms

Thirty-six 8" legs

Thirty-six 16" legs

Twelve 24" legs

Twelve 32" legs

Twelve 40" legs

Twelve 48" legs

Twelve 56" legs

DRAPERIES

Upstage (North wall) black velour on traveler track, split at center.

Six black velour legs 18' high by 10'9" wide for legs or wall coverings.

Rep Drape plot includes the traveler and wall coverings on both side walls (East and West).

Carsen Theater Technical Specifications

All lighting and sound is set up to be run from the tech booth, above the house right audience entrance (South side).

The lighting grid is 18' from the stage floor.

The size of the room is 34' 6" wide from wall to wall (east to west) and 39' deep. There are black drapes on traveler tracks on the north wall to cover the storage area and create an upstage crossover. There are black drapes that can be hung to create 3 wings on each side of the stage.

The rep drape plot must be restored upon checkout or loss of security deposit may result. Adequate time should be contracted to assure that this is done.

The rep light plot, focus, and color must be restored upon checkout or loss of security deposit may result. Adequate time should be contracted to assure that this is done.

Unless otherwise contracted, a Dairy technical director will check a company in at the beginning of their rental to assure that the theater is in good clean condition, that the equipment is in good working order, and to assure that the company knows how to use the Dairy's technical equipment. The Dairy technical director will also check the company out to assure that the room is in the same condition as it was upon check in. Black paint will be available if the floor is in need of a repaint.

It is up to the company to keep the theaters in clean and presentable condition. The theater should be in clean condition before an audience enters. Trash and recycling containers are provided in the dressing rooms and the theaters. It's the company's responsibility to empty them before they become overflowing. The trash and recycling dumpsters are on the south end of the back parking lot.

There is no smoking or open flames allowed in the space. Any and all pyrotechnics must be approved by the Fire Marshall of the city of Boulder and executed by a licensed practitioner. Any use of the theater that does not comply with the laws of the city or the rules of The Dairy will result in loss of security deposit and possible breach of contract.

It is the responsibility of the company to restore the theater to its original condition as requested by the Dairy technical director. FAILURE TO RESTORE THE THEATER TO ITS ORIGINAL CONDITION MAY RESULT IN THE LOSS OF THE RENTER'S SECURITY DEPOSIT.

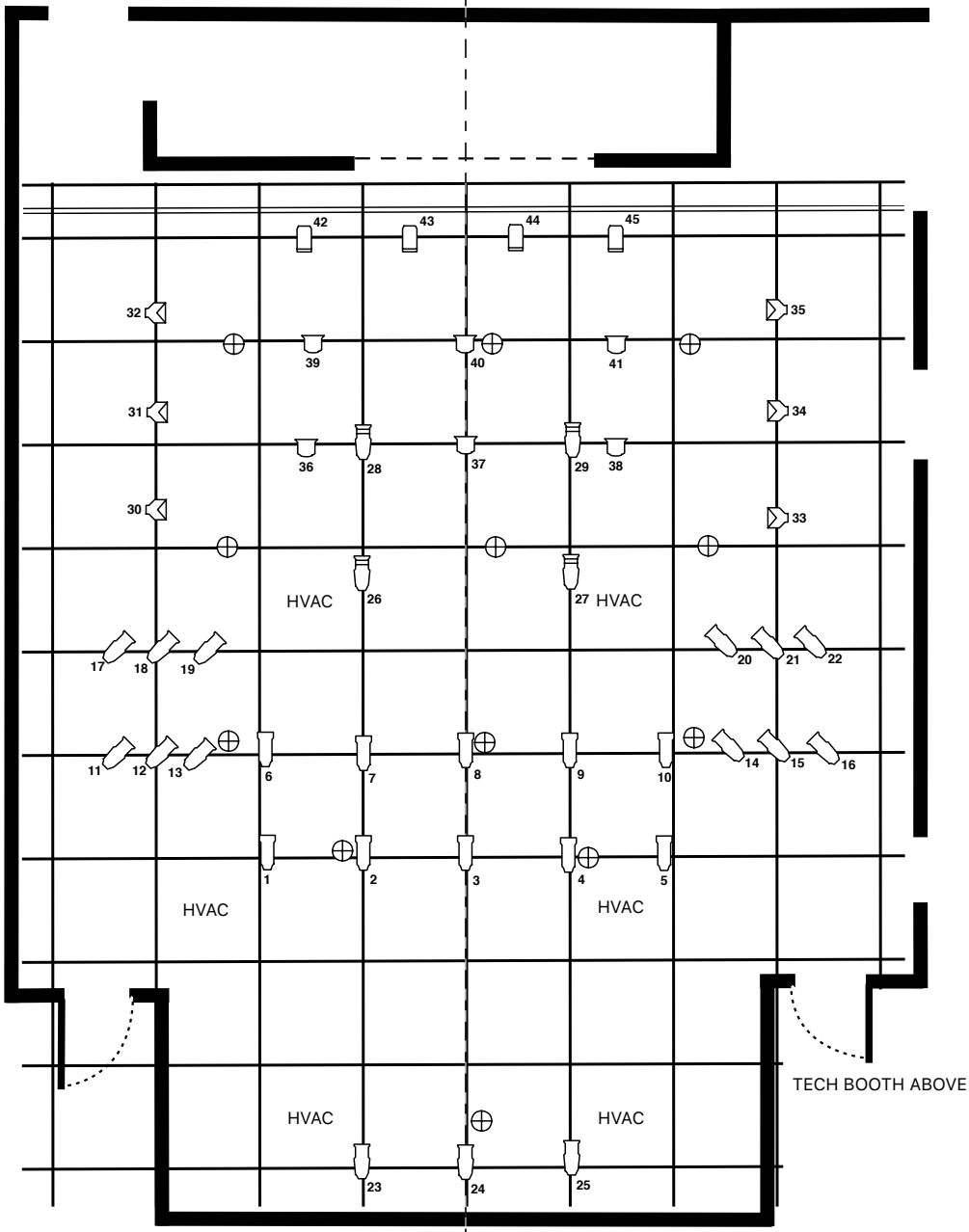
Anything out of the ordinary that may happen in the Carsen Theater which may compromise the integrity of the room or its equipment must be approved in writing by the Dairy technical director. This includes, but is not limited to: tap or flamenco dancing, throwing anything (juggling balls, rice, glitter, water, flower petals), paint, hazers or fog machines, any kind of glass on stage, or any kind of food onstage. Any compromise of the space or its equipment may result in the loss of the renter's security deposit.

The Carsen Theater is a configurable performance space with the ability to have the audience in a variety of configurations. The room will be set up in a configuration of 6 rows of risers, seating up to 66 chairs (77 with a row of chairs on the floor). If the presenter wishes to change the configuration, they must supply the crew to do the adjustment and it must be returned to the original configuration at the end of the rental. There are enough risers to create a ¾ thrust performance area. But the size of the stage is affected by the size and configuration of the seating area.

Dairy Arts Ctr	Rep Plot
Venue: Carsen Theater	
Designer:	
1/19/17	

Key	36° Source Four	6" Fres
	25-50° Source Four Zoom	Acclaim Fres
	36° Source Four Jr.	Location
	WFL	

Black Traveler



Dairy Arts Ctr		Ground Plan
Venue:	Carsen Theater	

